

Connecting to an ETS-Lindgren Ethernet Device User Manual

ETS-Lindgren Inc. reserves the right to make changes to any products herein to improve functioning or design. Although the information in this document has been carefully reviewed and is believed to be reliable, ETS-Lindgren does not assume any liability arising out of the application or use of any product or circuit described herein; nor does it convey any license under its patent rights nor the rights of others. All trademarks are the property of their respective owners.

© Copyright 2019 by ETS-Lindgren Inc. All Rights Reserved. No part of this document may be copied by any means without written permission from ETS-Lindgren Inc.

Trademarks used in this document: The ETS-Lindgren logo is a registered trademark of ETS-Lindgren, Inc.

Revision Record

MANUAL,CONNECT TO ETS-L ETHERNET DEVICE | Part # 1708812 Rev A

Revision	Description	Date
A	Initial Release	August, 2019

TABLE OF CONTENTS

Factory Configurations	4
Ensure that the Ethernet Adapter is Installed	5
Configuring the Ethernet Adapter	6
Changing the Device Ethernet Configuration	9
Ensure the Connection is Working	10

Factory Configurations

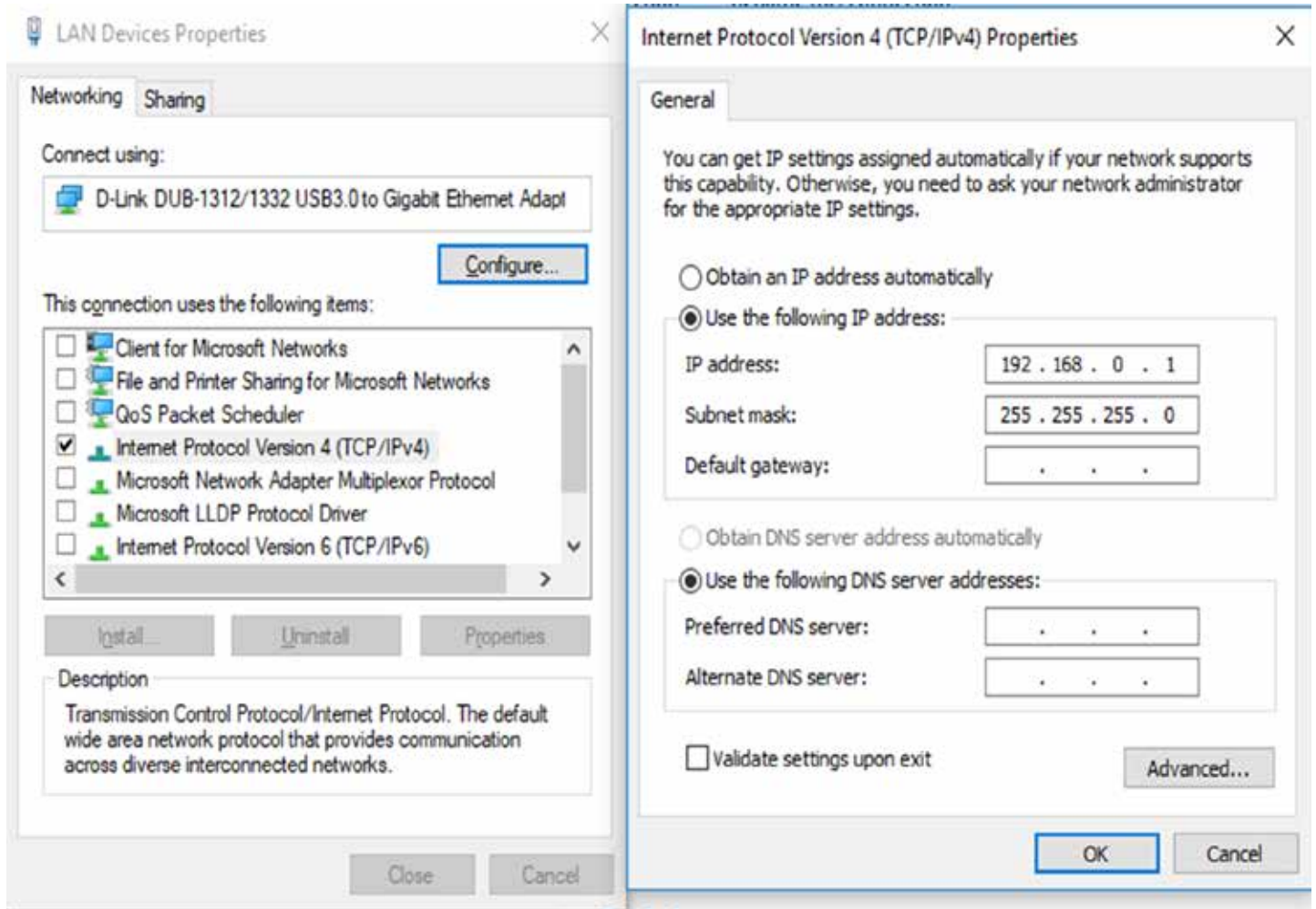
ETS-Lindgren Ethernet devices are factory configured as follows:

IP Address: 192.168.0.100

Net Mask: 255.255.255.0

Default Gateway: 192.168.0.1

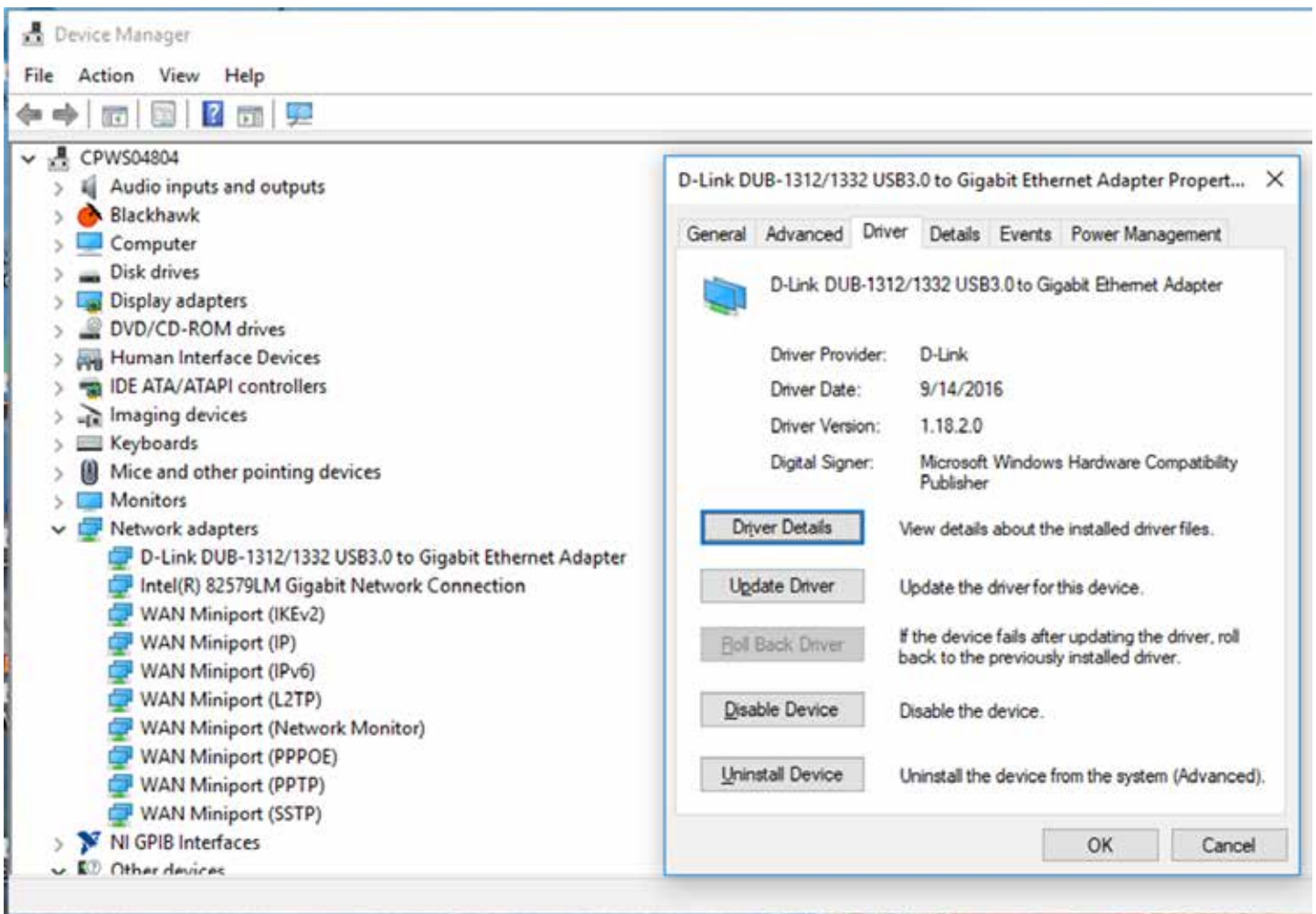
If an Ethernet adapter driver is already known to be installed, configure your computer Ethernet interface as shown below to connect to the device for the first time.



Ensure that the Ethernet Adapter is Installed

An Ethernet adapter, also known as a network card, network interface card, or network interface controller, provides a physical port for networking media such as Ethernet cables. It communicates with the computer and allows it to access a network device.

1. Open Device Manager and select "Network Adapters".
2. Right-click the network adapter you want.
3. Click **Properties**; the Properties window will show the Ethernet adapter's status.

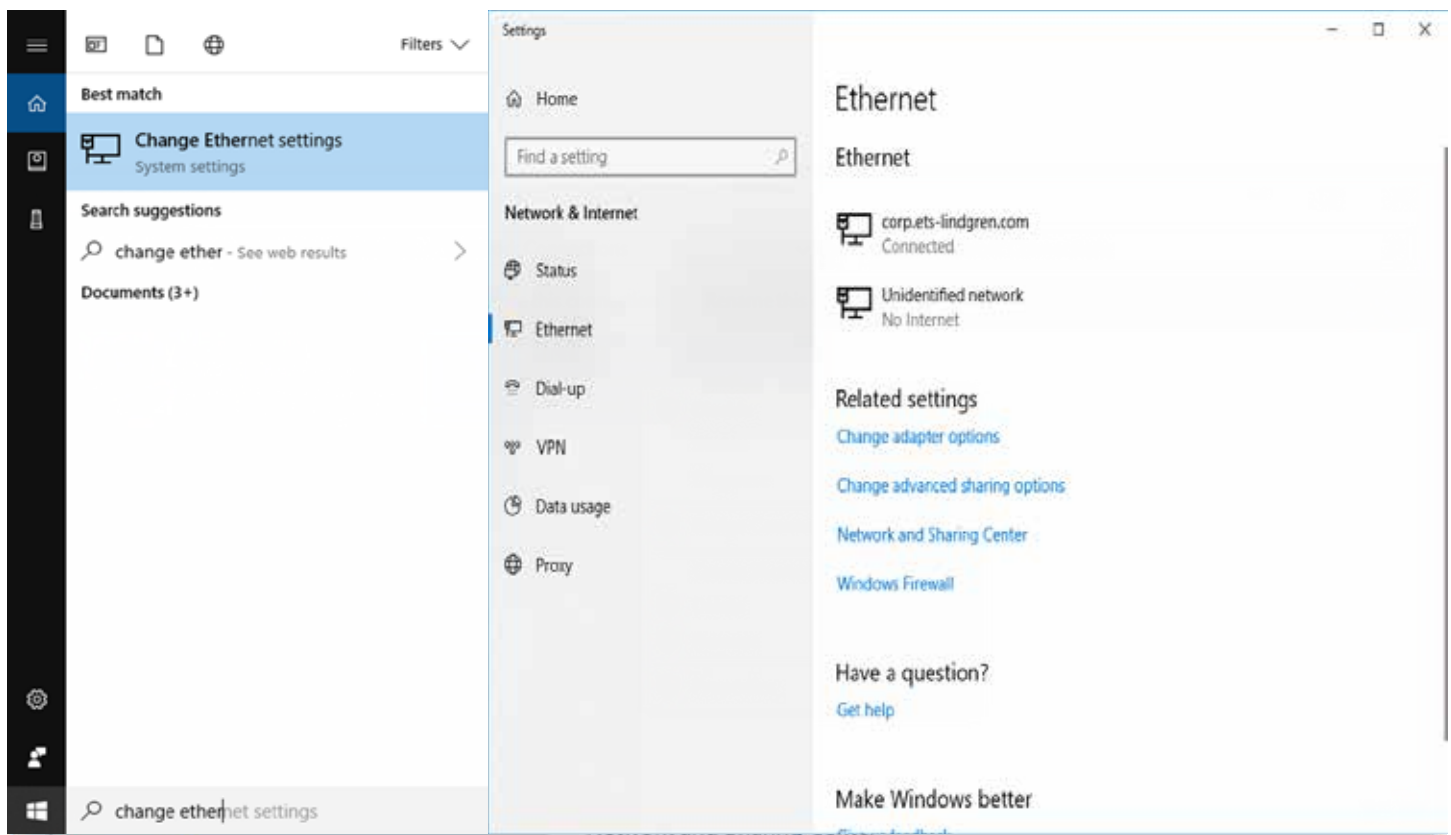


Configuring the Ethernet Adapter

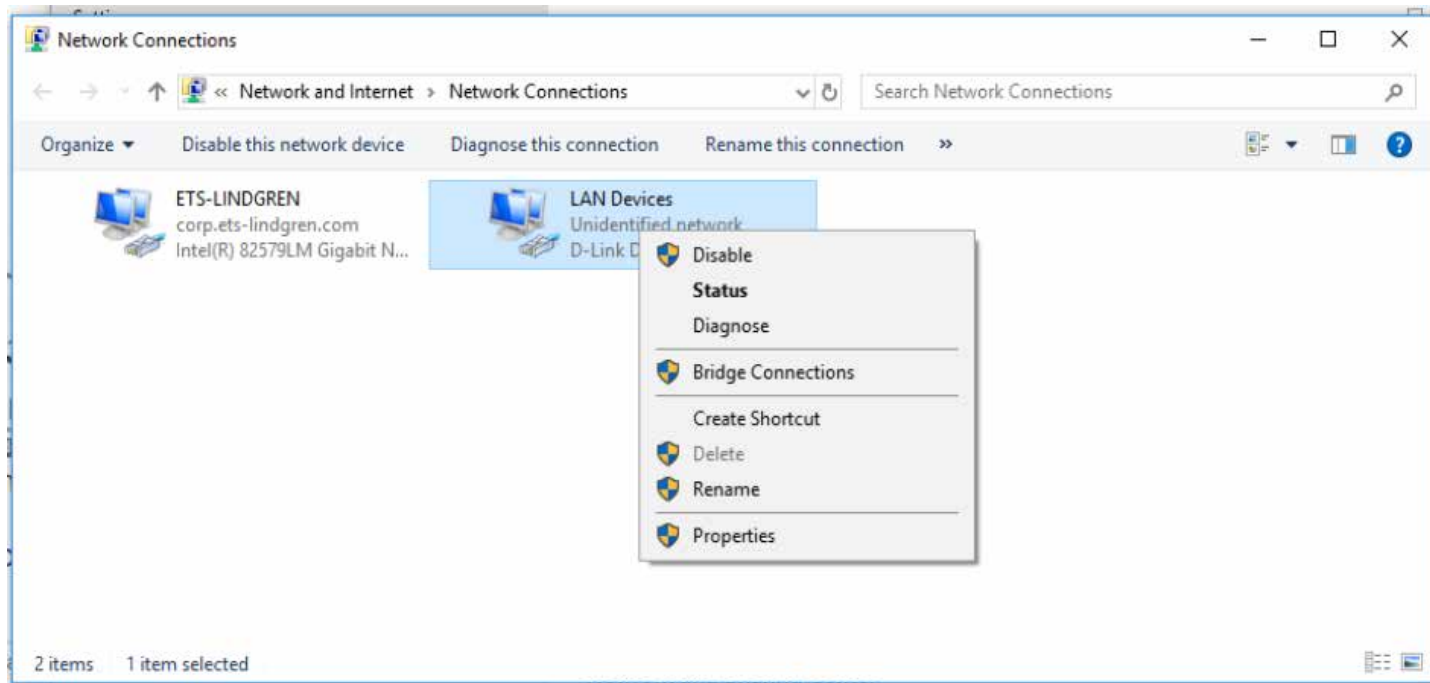
1. In Windows, click **Start**.
2. Type "Change Ethernet settings" into the search box.
3. In the search results, click **Change Ethernet settings**.
4. In the Settings window, click **Change Adapter options**.



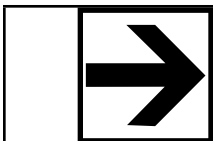
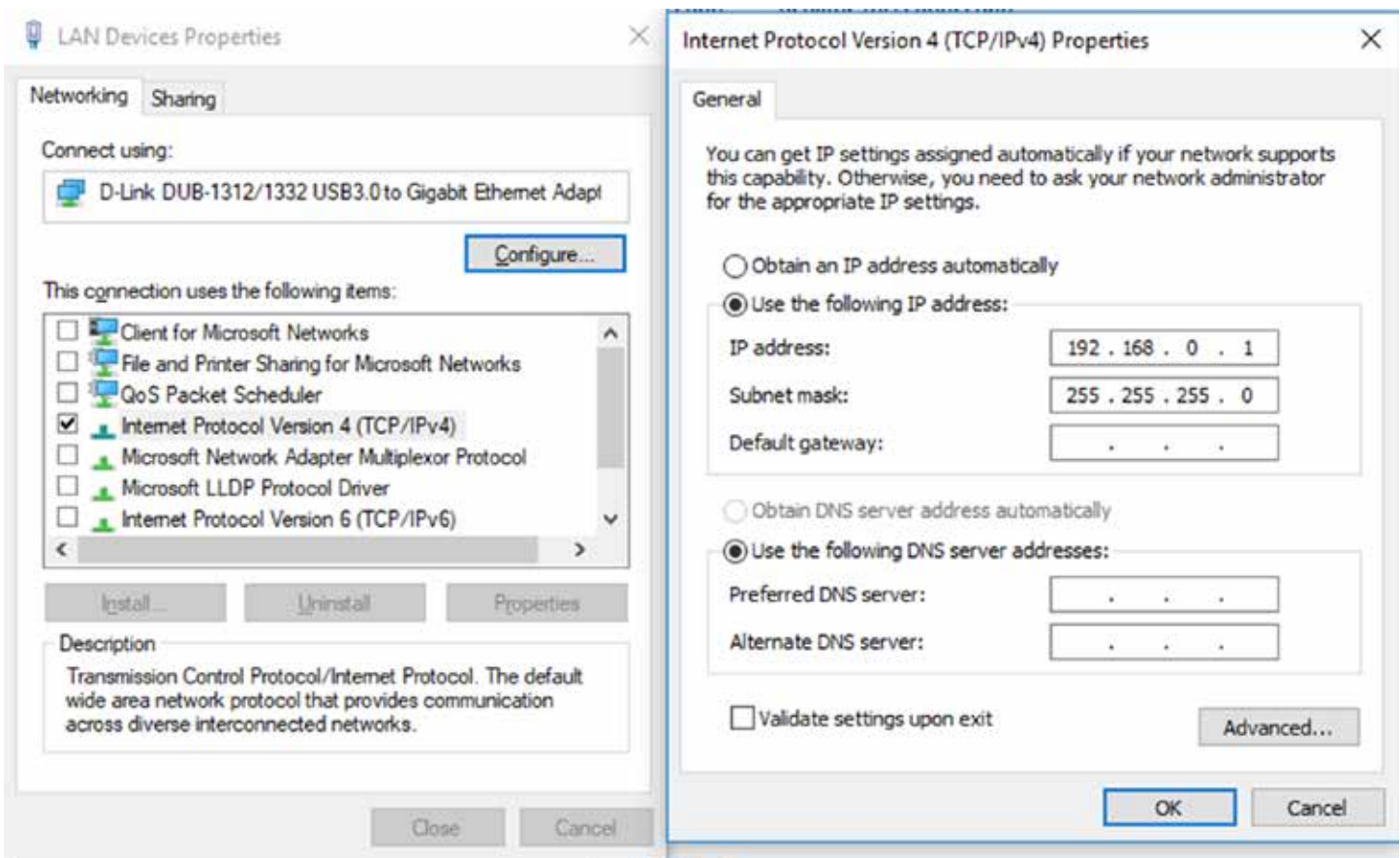
Note: You must have administrator permissions to change the configuration.



5. Right-click the Ethernet Adapter you want to configure and select "Properties."



6. Select "Internet Protocol Version 4 (TCP/IPv4) and click **Properties**.
7. Select "Use the following IP address" and fill out the addresses as follows:
IP address: 192.168.0.1
Subnet mask: 255.255.255.0
Default gateway: blank
8. Choose "Use the following DNS server addresses" and leave "Preferred" and "Alternate DNS" server fields blank.
9. Click **OK**.



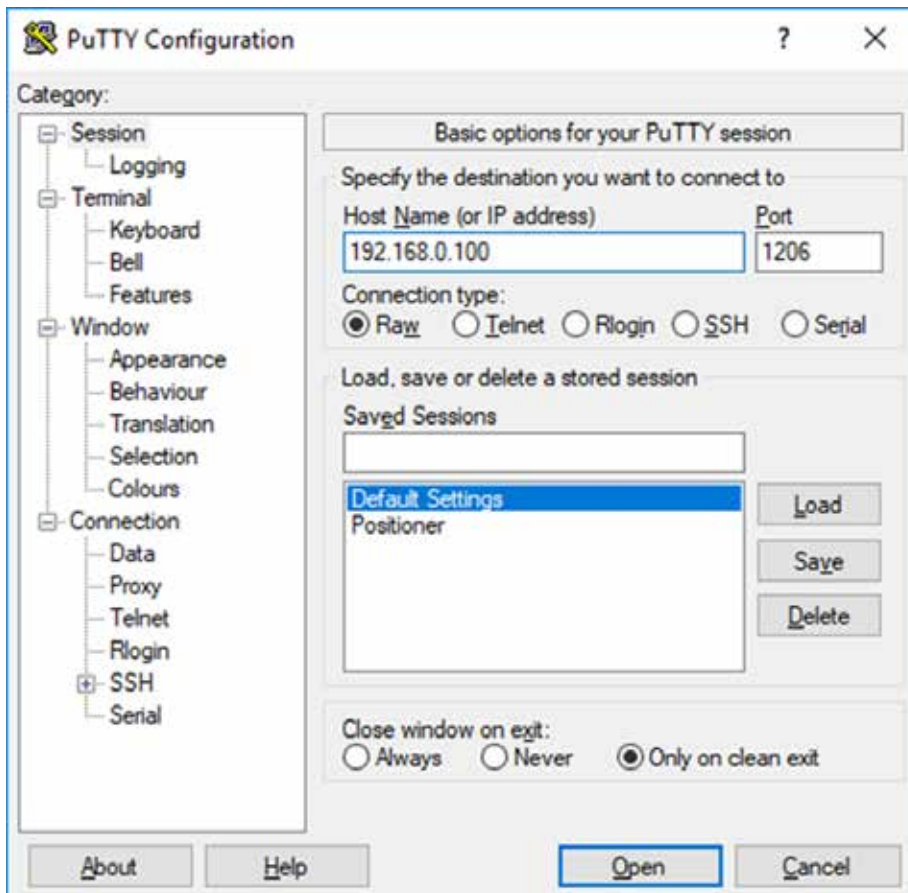
Note: Information about subnet mask can be found here: <https://www.iplocation.net/subnet-mask> and here: <https://searchnetworking.techtarget.com/definition/subnet>

Changing the Device Ethernet Configuration

1. Connect to the device using any TCP/IP capable terminal application.
2. Run PuTTY, point it to Host 192.168.0.100 Port 1206, set Connection type as "Raw." Click **Open**.



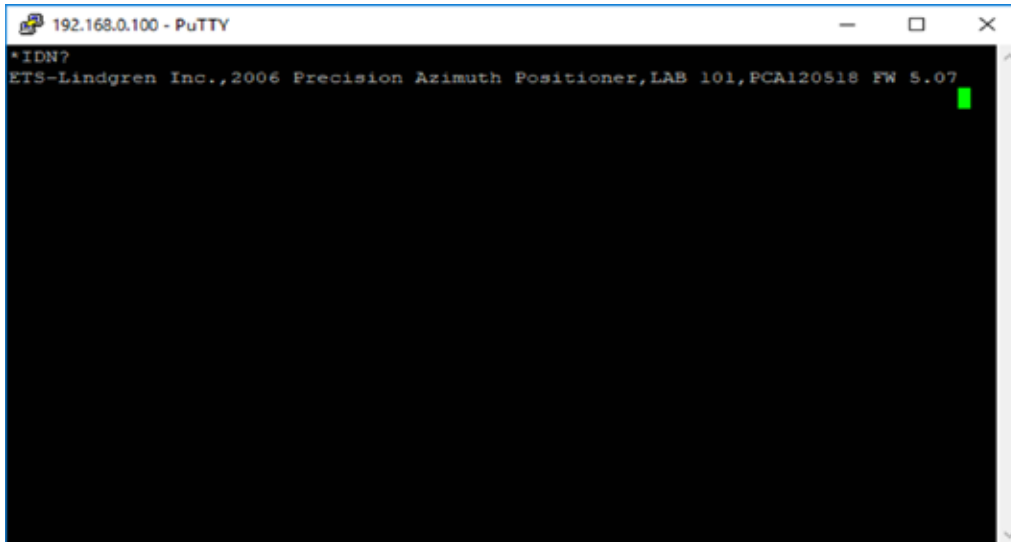
Note: PuTTY is a good candidate. PuTTY is a free (MIT-licensed) Windows Telnet and SSH client and can be downloaded from <https://www.putty.org/>.



Ensure the Connection is Working

1. Type *IDN?
2. Hit Enter.

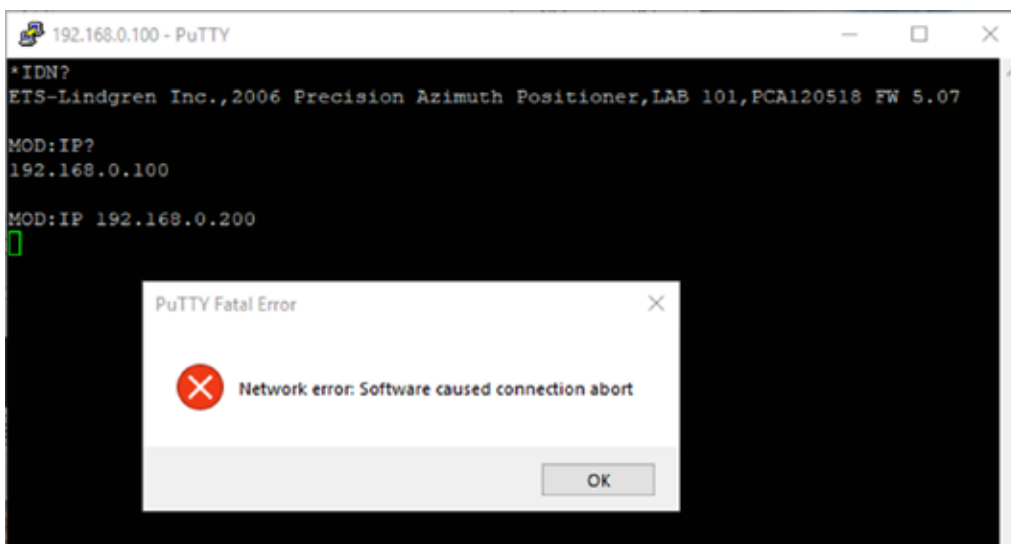
The device will respond with an identification string such as the one below:



```
192.168.0.100 - PuTTY
*IDN?
ETS-Lindgren Inc.,2006 Precision Azimuth Positioner,LAB 101,PCA120518 FW 5.07
```

The IP address can be changed using the MOD:IP command. For instance, check the current IP address by typing MOD:IP?

To change the IP address to 192.168.0.200, type MOD:IP 192.168.0.200 and hit "Enter". The device will set the new address and reset the connection.



```
192.168.0.100 - PuTTY
*IDN?
ETS-Lindgren Inc.,2006 Precision Azimuth Positioner,LAB 101,PCA120518 FW 5.07
MOD:IP?
192.168.0.100
MOD:IP 192.168.0.200
```

PuTTY Fatal Error
Network error: Software caused connection abort
OK

