

Installing and Using the ETS-Lindgren Upgrade Wizard

Installing and Using the ETS-Lindgren Upgrade Wizard

SUMMARY

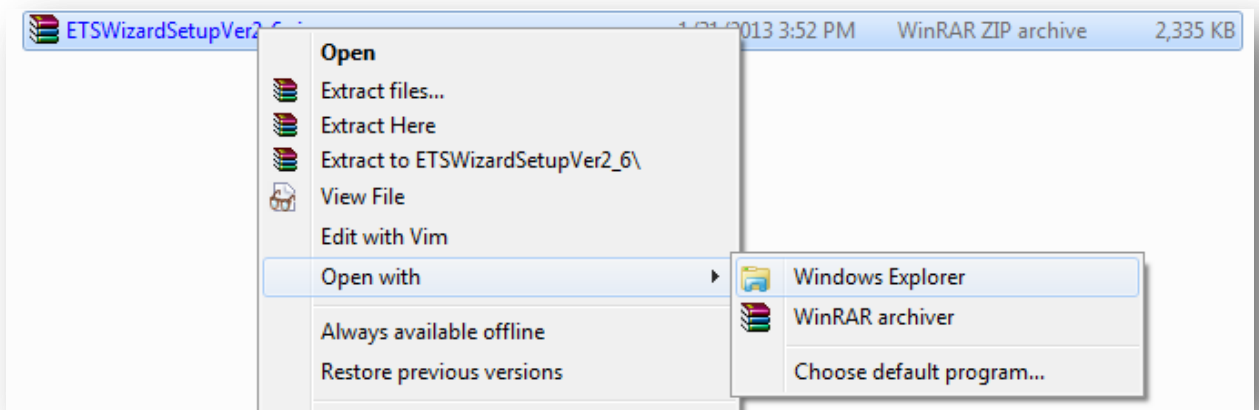
This document provides information to help you download and install the **ETS-Lindgren Upgrade Wizard Version 2.X**. It also includes an example on how to use the wizard to upgrade an ETS-Lindgren motor base V device.

CONTENTS

- [Section 1](#)—Downloading and installing the wizard
- [Section 2](#)—Using the wizard to upgrade an ETS-Lindgren motor base V device

SECTION 1: DOWNLOADING AND INSTALLING THE UPGRADE WIZARD

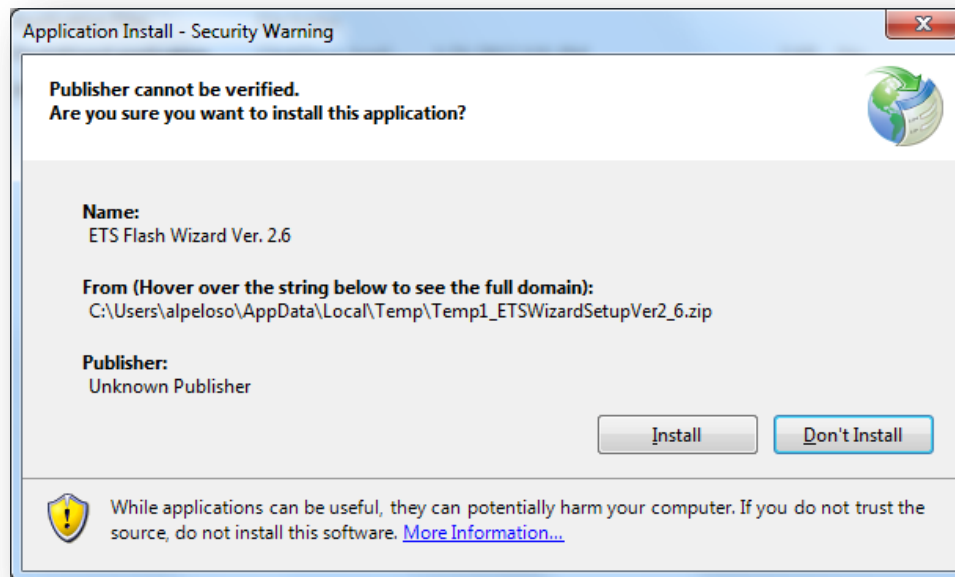
1. Download the ETS-Lindgren Upgrade Wizard Version 2.X (**ETSWizardSetupVer2_X.zip**) from www.ets-lindgren.com/page/?i=softwareupdates to your computer.



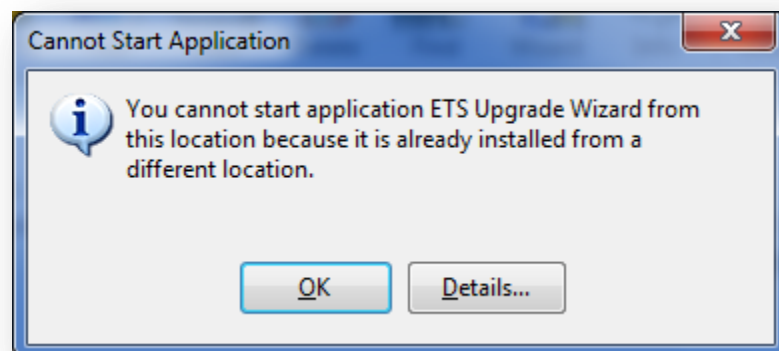
2. Right-click on your local **ETSWizardSetupVer2_X.zip** copy and choose “Open with Windows Explorer” as illustrated in the picture below.
3. The contents of the Zip files are shown on the next picture. Double-click on the “**setup.exe**” entry to start the installation.

Name	Type	Date modified
Application Files	File folder	
FlashWizard.application	ClickOnce Appli...	1/31/2013 3:51 PM
setup.exe	Application	1/31/2013 3:51 PM

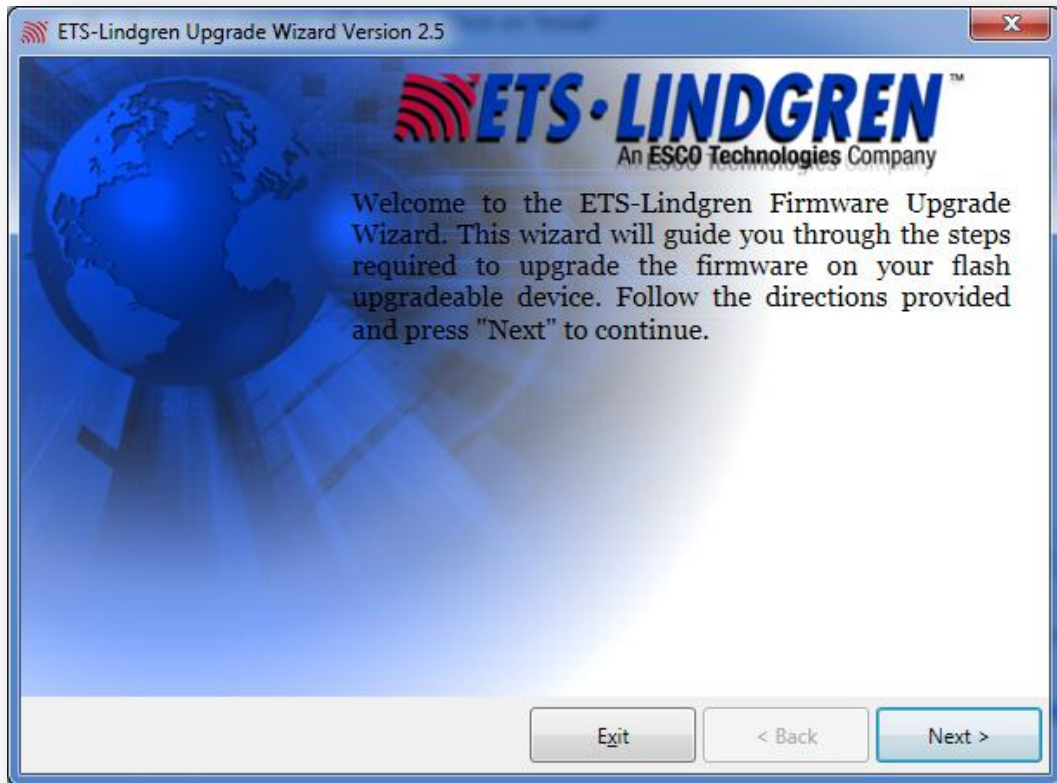
4. A security warning will pop up. Click on "Install".



Note: If you already have the Wizard installed, a message from Windows will pop-up stating that it cannot start the application because it is already installed from another location (see the following picture). Please uninstall your current version of ETS Upgrade Wizard and try try to install it again.



5. The Upgrade Wizard will run after the installation is completed. You should see the following welcome window.



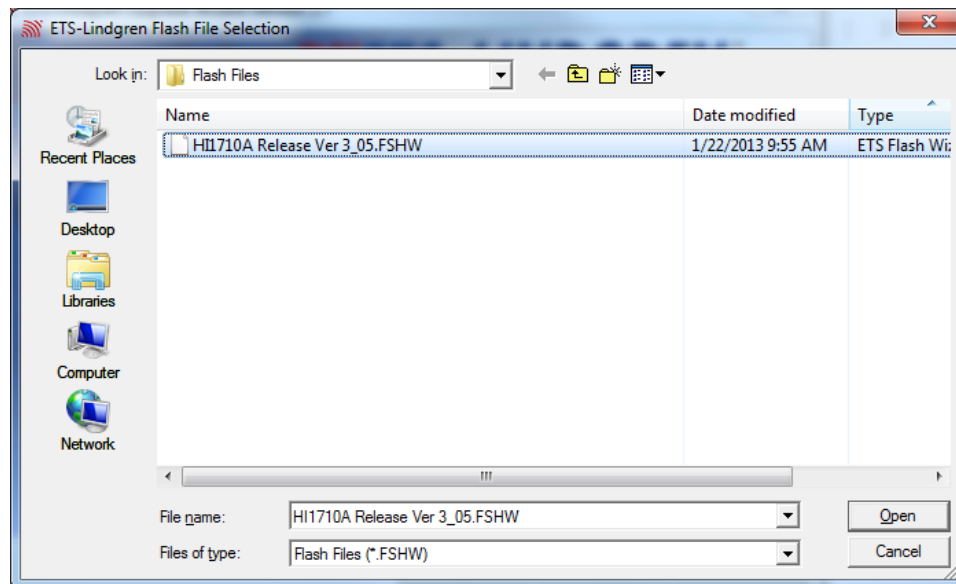
Note: To use the GPIB interface and communicate with devices, **the wizard uses National Instruments NI488.2 drivers** which are a standard for configuring, programming, and troubleshooting instrumentation systems using GPIB. Please check if you have the right GPIB drivers installed in your machine. You can download the GPIB drivers (NI-488.2 Version 3.0.2 for Windows) from <http://joule.ni.com/nidu/cds/view/p/id/2922/lang/en>.

Run the Upgrade Wizard again; it should not ask for the drivers.

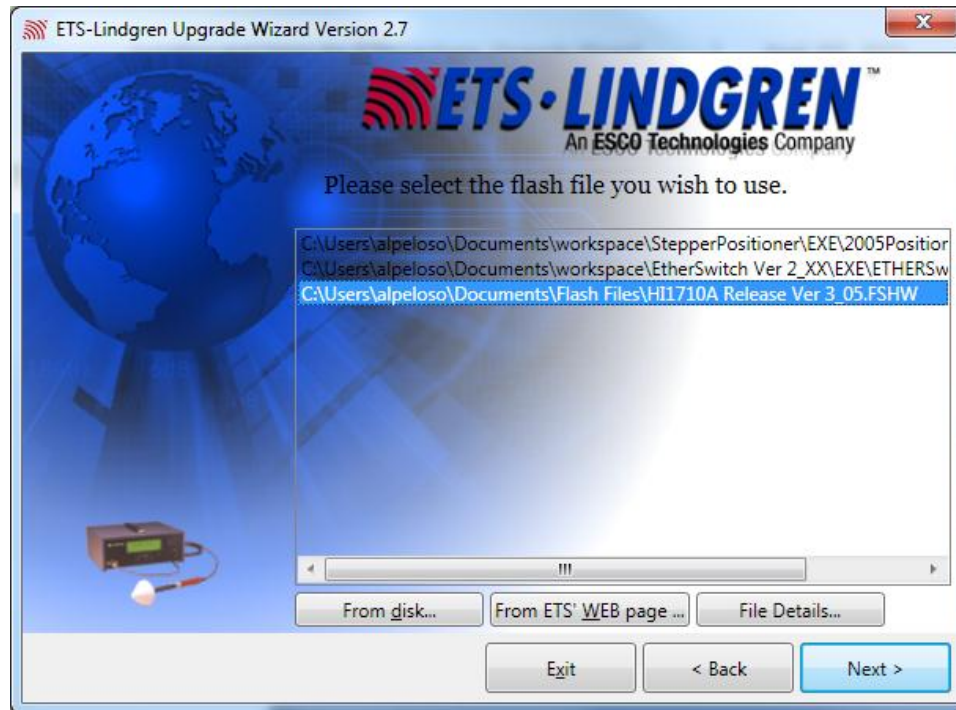
SECTION 2: USING THE WIZARD TO UPGRADE THE HI-1710A DEVICE.

1. Download the Flash upgrade Wizard from www.ets-lindgren.com/page/?i=softwareupdates.
To update the HI-1710A firmware, download **HI-1710A Ver 3_xx.FSHW**.
2. Load the flash file into the Upgrade Wizard by clicking **Have Disk** and selecting the flash file.

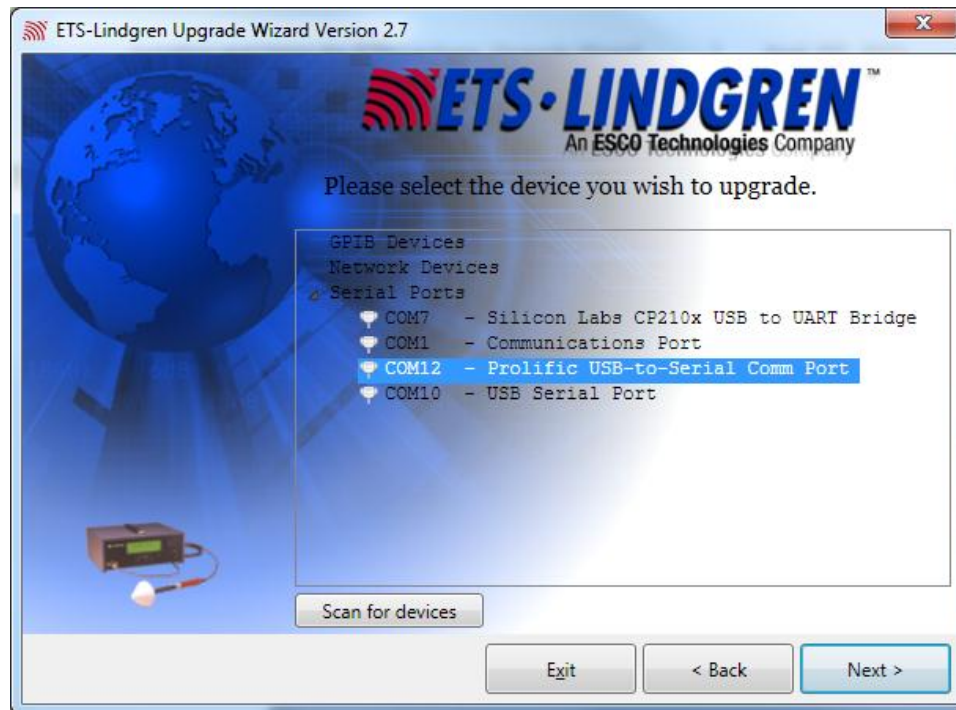
You can also drag the file from the ETS-Lindgren web page to the Upgrade Wizard



After loading the flash upgrade, the Upgrade Wizard should display a window like the one below. Click **NEXT**



3. Select the COM port device connected to the HI-1710A and click **NEXT**



4. Click **Upgrade** and wait until the upgrade is finished.



© Copyright 2012 by ETS-Lindgren L.P. All Rights Reserved. No part of this document may be copied by any means without written permission from ETS-Lindgren L.P.

Trademarks used in this document: The *ETS-Lindgren* logo is a trademark of ETS-Lindgren L.P.